

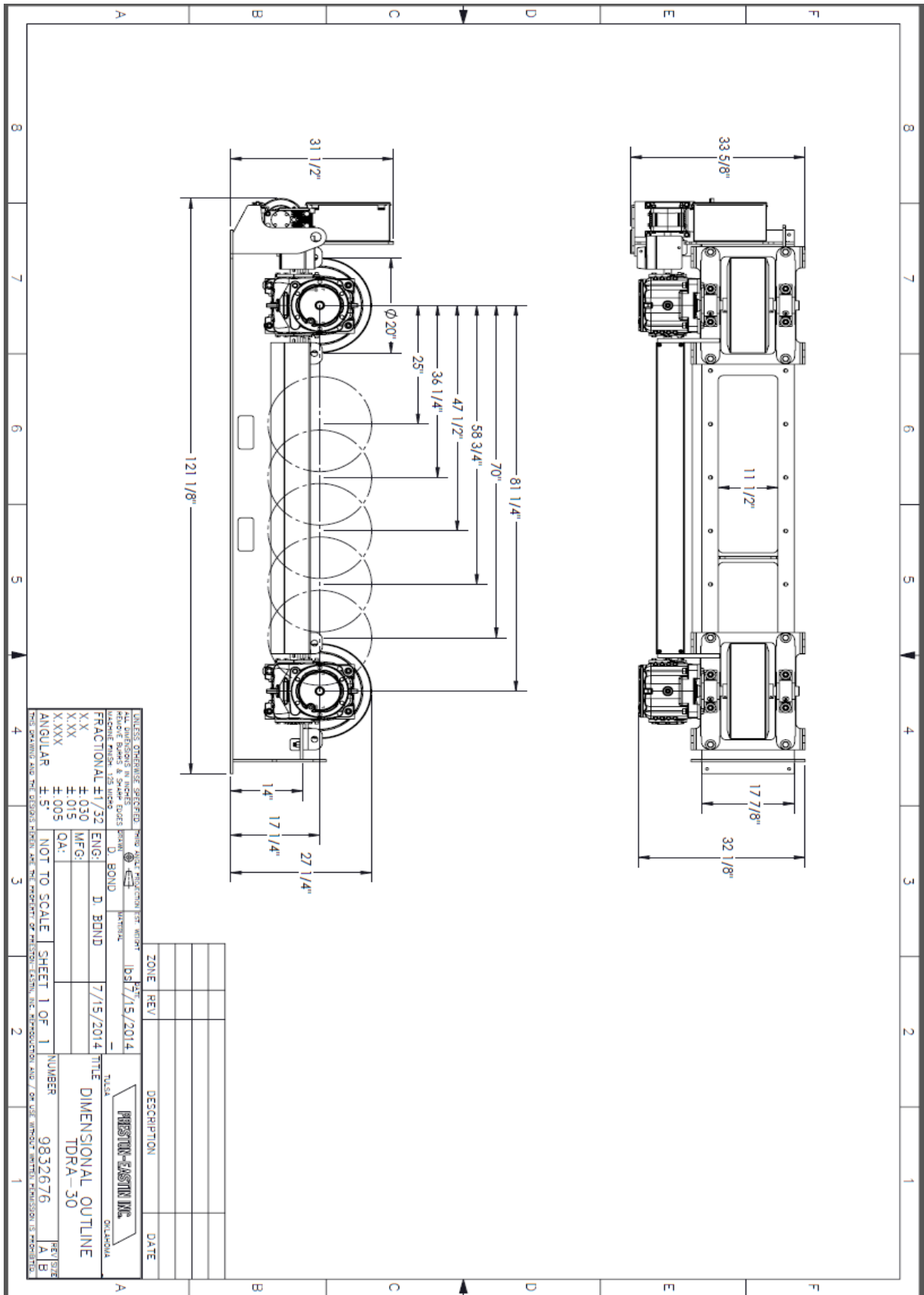


Model TDRA-30

The TDRA-30 turning rolls are ideal for construction, OEM, oil & gas, and contract manufacturing applications. They deliver precise and safe operation. Smoother turning yields higher quality welds, improved productivity, and a lower risk of operator injury.

Product Specifications

- Capacity
 - Weight: 30,000 pounds
 - Turning: 90,000 w/ 2 idlers
 - Work piece diameter: 8" inches to 20 feet
- Frame
 - Material: Welded Steel
 - **Precision:** CNC-drilled roller mounting holes
 - Adjustability: 6 center distance locations
- Drive
 - Wheel Speed: 1.3 to 43 inches per minute
 - Motor: 2 HP inverter duty AC
 - Motor Control: Variable Frequency Drive (VFD)
- Drive Train
 - Gearboxes: Cone Drive, worm type
 - Pillow Blocks: Timken, tapered roller bearings
 - Drive Shaft: Tubular steel
- Wheels
 - Tires: 1 per axle, 20" x 8", solid rubber, 85 durometer min.
- Controls
 - Pendant: Remote pendant with 30 foot cable
 - Speed Control: One turn potentiometer
 - Directional Control: 3 position selector switch
 - Rapid Traverse: 2 position selector switch
- Electricals
 - Power: 480V Three Phase, 60 Hz
 - Overload Protection: Fused disconnect
 - Foot Switch: Optional
- Shipping Weight: 2600 pounds



UNLESS OTHERWISE SPECIFIED THIS SHALL BE CONSIDERED AS AN ISO 2768-MSD DIMENSIONAL TOLERANCE PER ASME Y14.5-2009

ALL DIMENSIONS IN INCHES	DATE	10/7/15/2014
REFERENCE BORDS & 2nd-4th BORDS	APPROVAL	
FRACTIONAL ± 1/32 ENGR	D. BOND	
XXX ±.030 MFG		
XXX ±.015 O.A.		
XXXX ±.005		
ANGULAR ±.5°	NOT TO SCALE	
SHEET 1 OF 1		
NUMBER 9832676		
TITLE DIMENSIONAL OUTLINE		
TDR-50		
DRAWN BY		
CHECKED BY		
DATE		

ZONE	REV	DESCRIPTION	DATE