

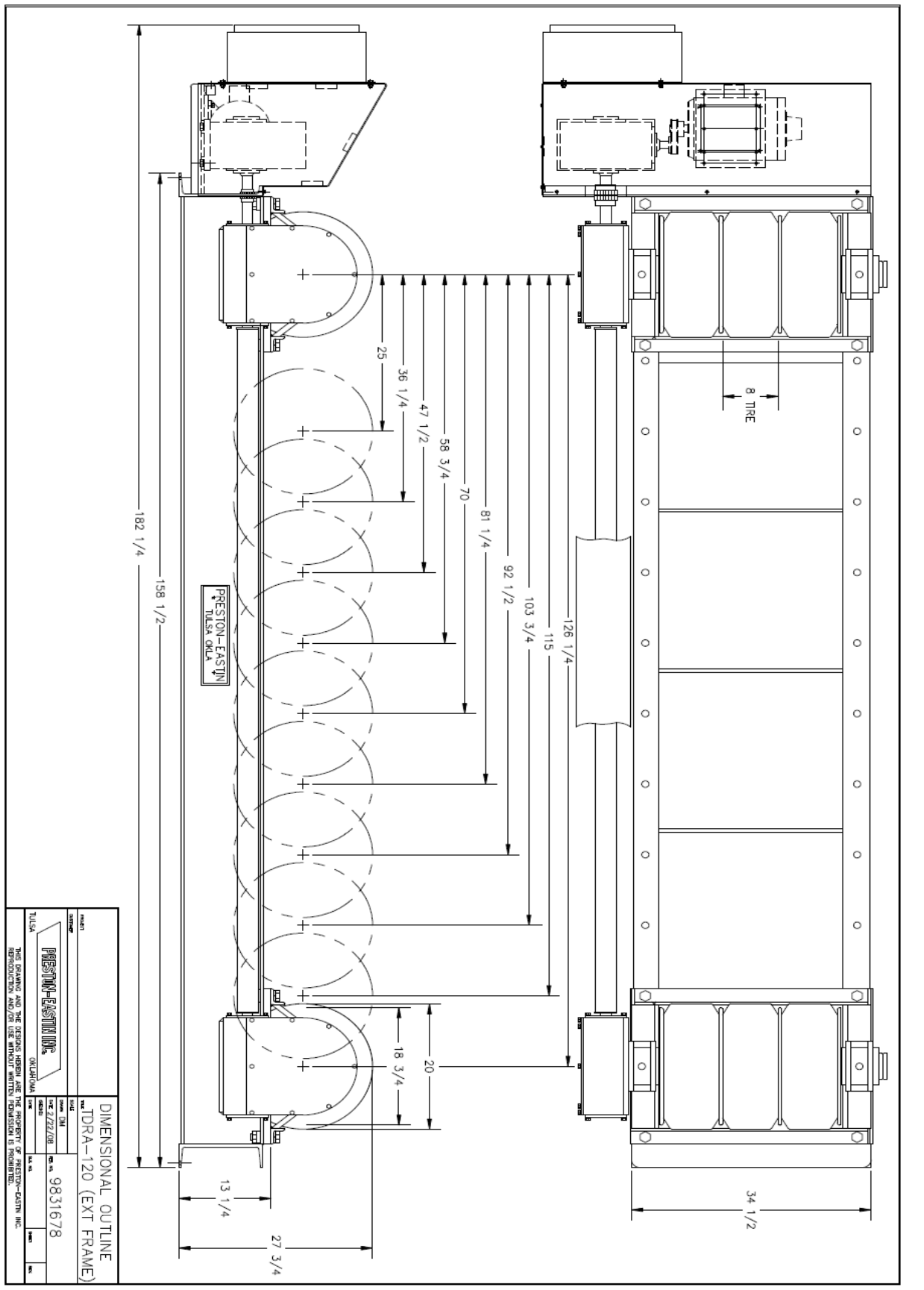


## Model TDRA-120

The TDRA-120 turning rolls are ideal for construction, OEM, oil & gas, and contract manufacturing applications. They deliver precise and safe operation. Smoother turning yields higher quality welds, improved productivity, and a lower risk of operator injury.

### Product Specifications

- Capacity
  - Weight: 120,000 pounds
  - Turning: 360,000 w/ 2 idlers
  - Work piece diameter: 8" inches to 30 feet
- Frame
  - Material: Welded Steel Channel
  - Precision: CNC-drilled roller mounting holes
  - Adjustability: 10 center distance locations
- Drive
  - Wheel Speed: 1.4 to 42 inches per minute
  - Motor: 5 HP inverter duty AC
  - Motor Control: Variable Frequency Drive (VFD)
- Drive Train
  - Gearboxes: Welded steel, worm drive
  - Worm: Hardened steel
  - Worm Gear: 90,000 psi aluminum bronze
  - Pillow Blocks: Welded steel, tapered roller bearings
  - Drive Shaft: Tubular steel
- Wheels
  - Tires: 3 per axle, 20" x 8", solid rubber, 85 durometer min.
  - Backup discs: 4 steel discs per axle
- Controls
  - Pendant: Remote pendant with 30 foot cable
  - Speed Control: One turn potentiometer
  - Directional Control: 3 position selector switch
  - Rapid Traverse: 2 position selector switch
- Electricals
  - Power: 480V Three Phase, 60 Hz
  - Overload Protection: Fused disconnect
  - Foot Switch: Optional
- Shipping Weight: 5000 pounds



		<b>DIMENSIONAL OUTLINE</b> TULSA OKLA	
PRESTONE-EASTON INC. 2727/08 9831678	PRESTONE-EASTON INC. 2727/08 9831678	PRESTONE-EASTON INC. 2727/08 9831678	PRESTONE-EASTON INC. 2727/08 9831678